



# MGST2 Polyclonal Antibody

<b>Catalog No</b>	YP-Ab-03956
<b>Isotype</b>	IgG
<b>Reactivity</b>	Human;Rat;Mouse;
<b>Applications</b>	WB;ELISA;IHC
<b>Gene Name</b>	MGST2
<b>Protein Name</b>	Microsomal glutathione S-transferase 2
<b>Immunogen</b>	Synthesized peptide derived from MGST2 . at AA range: 370-450
<b>Specificity</b>	MGST2 Polyclonal Antibody detects endogenous levels of MGST2 protein.
<b>Formulation</b>	Liquid in PBS containing 50% glycerol, 0.5% BSA and 0.02% sodium azide.
<b>Source</b>	Polyclonal, Rabbit,IgG
<b>Purification</b>	The antibody was affinity-purified from rabbit antiserum by affinity-chromatography using epitope-specific immunogen.
<b>Dilution</b>	WB 1:500-2000;IHC-p 1:50-300; ELISA 2000-20000
<b>Concentration</b>	1 mg/ml
<b>Purity</b>	≥90%
<b>Storage Stability</b>	-20°C/1 year
<b>Synonyms</b>	MGST2; GST2; Microsomal glutathione S-transferase 2; Microsomal GST-2; Microsomal GST-II
<b>Observed Band</b>	17kD
<b>Cell Pathway</b>	Endoplasmic reticulum membrane ; Multi-pass membrane protein . Microsome membrane ; Multi-pass membrane protein .
<b>Tissue Specificity</b>	Liver, spleen, skeletal muscle, heart, adrenals, pancreas, prostate, testis, fetal liver, and fetal spleen. Very low expression in lung, brain, placenta and bone marrow (PubMed:8703034). Abundantly expressed in human umbilical vein endothelial cells (at protein level) (PubMed:11322876).
<b>Function</b>	catalytic activity:RX + glutathione = HX + R-S-glutathione.,function:Can catalyze the production of LTC4 from LTA4 and reduced glutathione. Can catalyze the conjugation of 1-chloro-2,4-dinitrobenzene with reduced glutathione.,similarity:Belongs to the MAPEG family.,subunit:Homotrimer.,tissue specificity:Liver, spleen, skeletal muscle, heart, adrenals, pancreas, prostate, testis, fetal liver, and fetal spleen. Very low expression in lung, brain, placenta and bone marrow.,
<b>Background</b>	The MAPEG (Membrane Associated Proteins in Eicosanoid and Glutathione metabolism) family consists of six human proteins, several of which are involved in the production of leukotrienes and prostaglandin E, important mediators of inflammation. This gene encodes a protein which catalyzes the conjugation of leukotriene A4 and reduced glutathione to produce leukotriene C4. Alternatively



spliced transcript variants encoding different isoforms have been identified in this gene. [provided by RefSeq, Feb 2011],

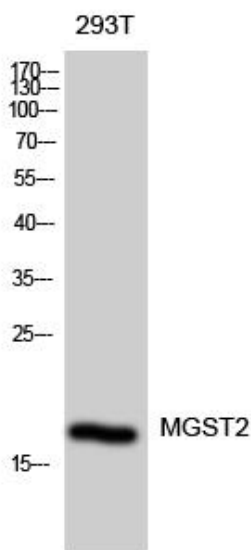
**matters needing attention**

Avoid repeated freezing and thawing!

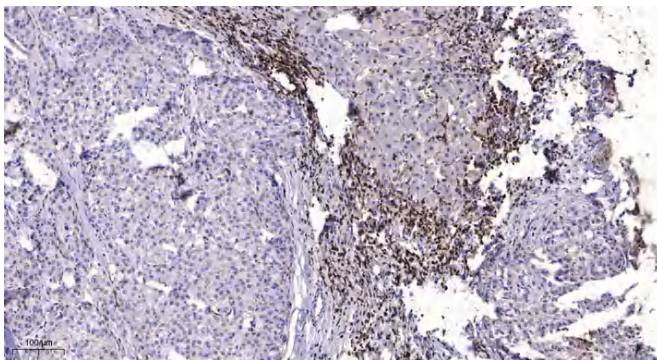
**Usage suggestions**

This product can be used in immunological reaction related experiments. For more information, please consult technical personnel.

**Products Images**



Western Blot analysis of 293T cells using MGST2 Polyclonal Antibody diluted at 1:2000



Immunohistochemical analysis of paraffin-embedded human liver cancer. 1, Antibody was diluted at 1:200(4° overnight). 2, Tris-EDTA,pH9.0 was used for antigen retrieval. 3,Secondary antibody was diluted at 1:200(room temperature, 45min).